 C R E D I T • V A L L E Y <small>THE CREDIT VALLEY HOSPITAL</small>		CLINICAL PRACTICE GUIDELINE	PROFESSIONAL PRACTICE
TITLE: Outpatient Management of Laparoscopic Cholecystectomy			
DATE OF ISSUE: 2006, 01	PAGE 1 OF 4 (Appendix)	NUMBER: CPG 15-1	
SUPERCEDES: 2002, 05 1997, 12	ISSUED BY: _____ TITLE: Chief of Medical Staff		
	ISSUED BY: _____ TITLE: President		

Purpose:

To define the selection and discharge criteria and treatment process for the outpatient management of laparoscopic cholecystectomy.

Definition:

Patients undergoing a laparoscopic cholecystectomy procedure with an anticipated length of stay less than 12 hours.

Treatment and Monitoring:

The operative process will be managed according to the algorithm titled **Management of Elective Laparoscopic Cholecystectomy. (Appendix 1)**

Selection of patients for outpatient management will be only those patients who meet the following **Selection Criteria. (Pre/Intra Operatively)**

- No age restriction, assess need for admission if greater than 70 years
- American Society of Anesthesiologists (ASA) class 1 and 11 (**Appendix 2**)
- No conditions requiring admission for monitoring
- No acute cholecystitis
- No conversion to open cholecystectomy
- The patient should have a good understanding of post-operative instructions. As well, they should feel that they will be able to cope with the post-operative home care instructions.
- Patients must live within 20 minutes of a center which provides emergency surgical services.

The surgeon will order that the patient may be discharged by Nursing when the patient meets the **Discharge Criteria.**

The nurse will assess the patient's readiness for discharge post-surgery using the Discharge Criteria. All criteria will be met prior to discharge. If the criteria are not met, a physician assessment is required prior to discharge if LOS > 24 hours.

The surgeon may initiate this guideline by completing the preprinted Physician Orders Laparoscopic Cholecystectomy Postoperative Care [#40006 D HR](#)

Discharge Criteria: (PACU/SDC/1B)

- Surgical Day Care Score > 8
- Able to void
- Wounds dry
- Patient to be discharged with an escort
- Patient/caregiver has verbalized/demonstrated understanding of written discharge instructions.

Evaluation:

1. The target goal for out-patient laparoscopic cholecystectomy is 80% of procedures selected.

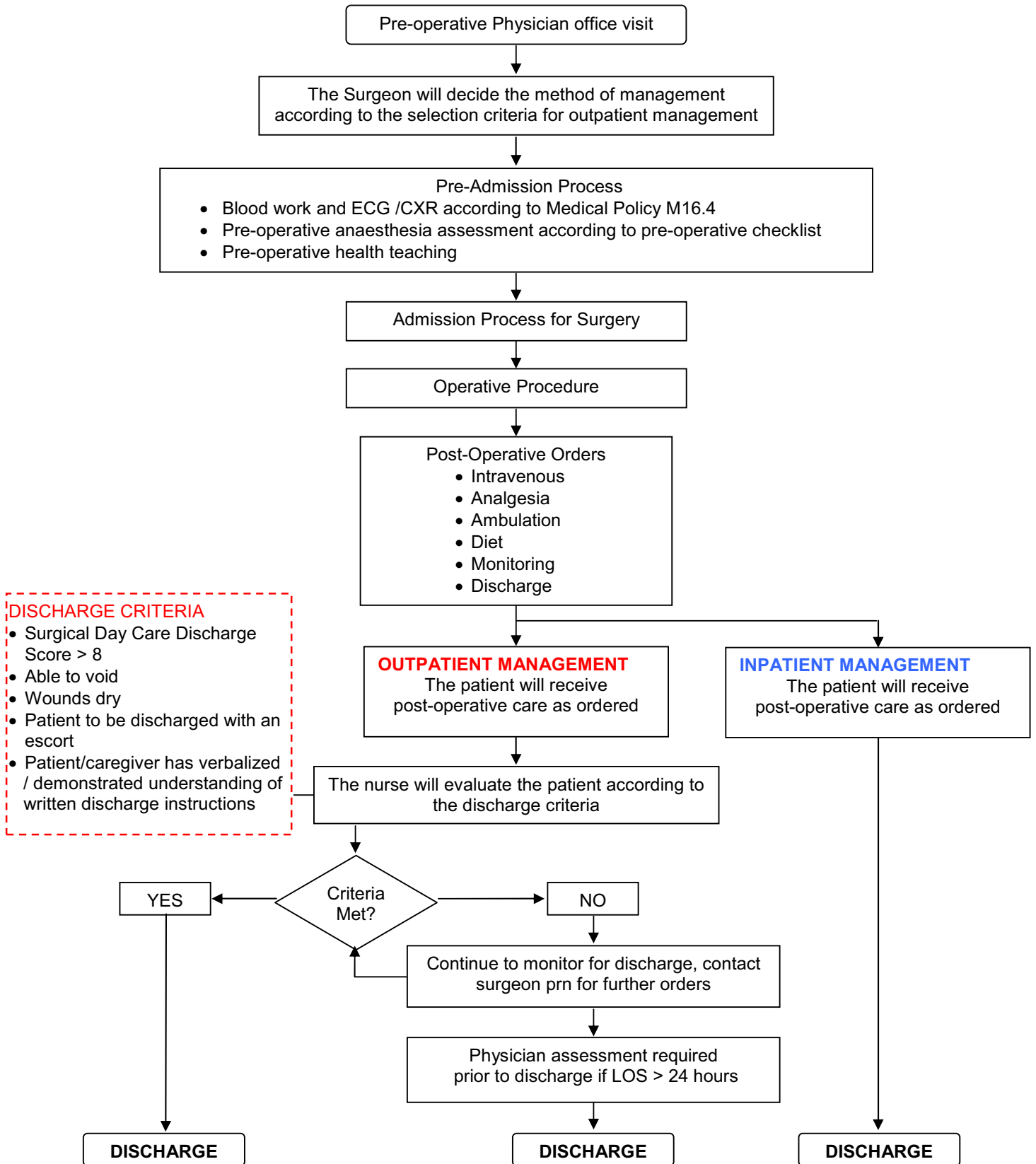
References:

1. Joshi, G.P., New concepts in recovery after ambulatory surgery. J of Ambulatory Surgery. 10 (2003) 167-170.
2. Kleinbeck S, Hoffart. Outpatient Recovery After Laparoscopic cholecystectomy. AORN Journal, 60(3):394-402, 1994 Sept
3. Orlando R, Russell J. Managing Gallbladder Disease in a Cost Effective Manner. Surgical Clinics of North America, 76(1):117, 1996 Feb
4. Voitk A, Outpatient Cholecystectomy: Implications for hospital utilization. Leadership, 3(5):21-23
5. Smith R, Kolyn D, Pace R. Outpatient Laparoscopic Cholecystectomy. HPB Surgery, 7:261-264, 1994
6. Saunders B F, Leary B M, Wolfe, Is outpatient laparoscopic cholecystectomy wise? Surg Endoscopy, 9:1263-1268, 1995
7. Simpson JP, Savarise MT, Moore J. Outpatient laparoscopic cholecystectomy: what predicts the need for admission? Am Surg. 1999;17:21-23.
8. Hung L, Brooks DC, Predictive Factor for Unanticipated Admissions After Ambulatory Laparoscopic Cholecystectomy. Arch. Surg, 136:1150-1153, 2001

Approval:

Department of Surgery: December 2005
Surgery Programme Steering Committee: January 2006

Management of Elective Laparoscopic Cholecystectomy



Appendix 2

American Society of Anesthesiologists (ASA) Classification

- I. Healthy patient
- II. Mild systemic disease – no functional limitation
- III. Severe systemic disease – definite functional limitation
- IV. Severe systemic disease that is a constant threat to life
- V. Moribund patient not expected to survive without operation.
In the event of emergency surgery, precede the number with an “E”