

PHYSICIAN'S ORDERS  
LOW RISK CHEST PAIN MANAGEMENT  
IN EMERGENCY DEPARTMENT (Adult)

Weight \_\_\_\_\_ (kg)

REFER TO THE ALLERGY SCREEN IN MEDITECH FOR ALLERGY INFORMATION

To complete the order form, fill in the required blanks and/or check the appropriate boxes.  
To delete orders, draw one line through the item and initial.

TO BE USED FOR LOW RISK CHEST PAIN PATIENTS  
I.E. NO ISCHEMIC ECG CHANGES,  
NORMAL TROPONIN - SEE GUIDELINES ON BACK

PART A - INITIAL MANAGEMENT

Repeat ECG at 6 and 10 hours from onset of chest pain and whenever clinically appropriate  
CK/CKMB and Troponin I at 6 and 10 hours from onset of chest pain

CBC, lytes, urea, creatinine, BS (if not already done)

Continuous ECG monitoring if appropriate

Chewable ASA 160 mg (2 x 80 mg) po x 1 (if not already given)

Nitroglycerin Spray prn

Chest x-ray (if not already done)

Vitals q4h

DAT or \_\_\_\_\_

AAT (if applicable, may come off monitory for bathroom privileges)

Date: \_\_\_\_\_ Time: \_\_\_\_\_

MD SIGNATURE \_\_\_\_\_

PART B - REASSESSMENT FOLLOWING TROPONIN I AND ECG (See guidelines on back)

Discontinue Initial Management, see new orders (if confirmed Acute Coronary Syndrome), complete  
Acute Coronary Syndromes (Non ST Elevation) and 3B Cardiology Admission Preprinted Physician Orders.

OR

Discharge patient

Discharge Orders

Book Exercise Stress Test in Cardiopulmonary Dept at CVH at next available appointment  
(appointment must be booked within 5 days).

A Cardiology consult will be done at the time the patient presents for the Exercise Stress Test.

OR

FOR PATIENTS ON BETA BLOCKERS: Book Exercise Stress Test on \_\_\_\_\_ (date)  
See guidelines on back of order for timing of test.

Fax copy of ER treatment record to Cardiopulmonary at 905-813-4046 and then return to chart

Faxed by: \_\_\_\_\_ Date: \_\_\_\_\_ Time: \_\_\_\_\_

Supply patient with:

- Patient information sheet - Low Risk Chest Pain

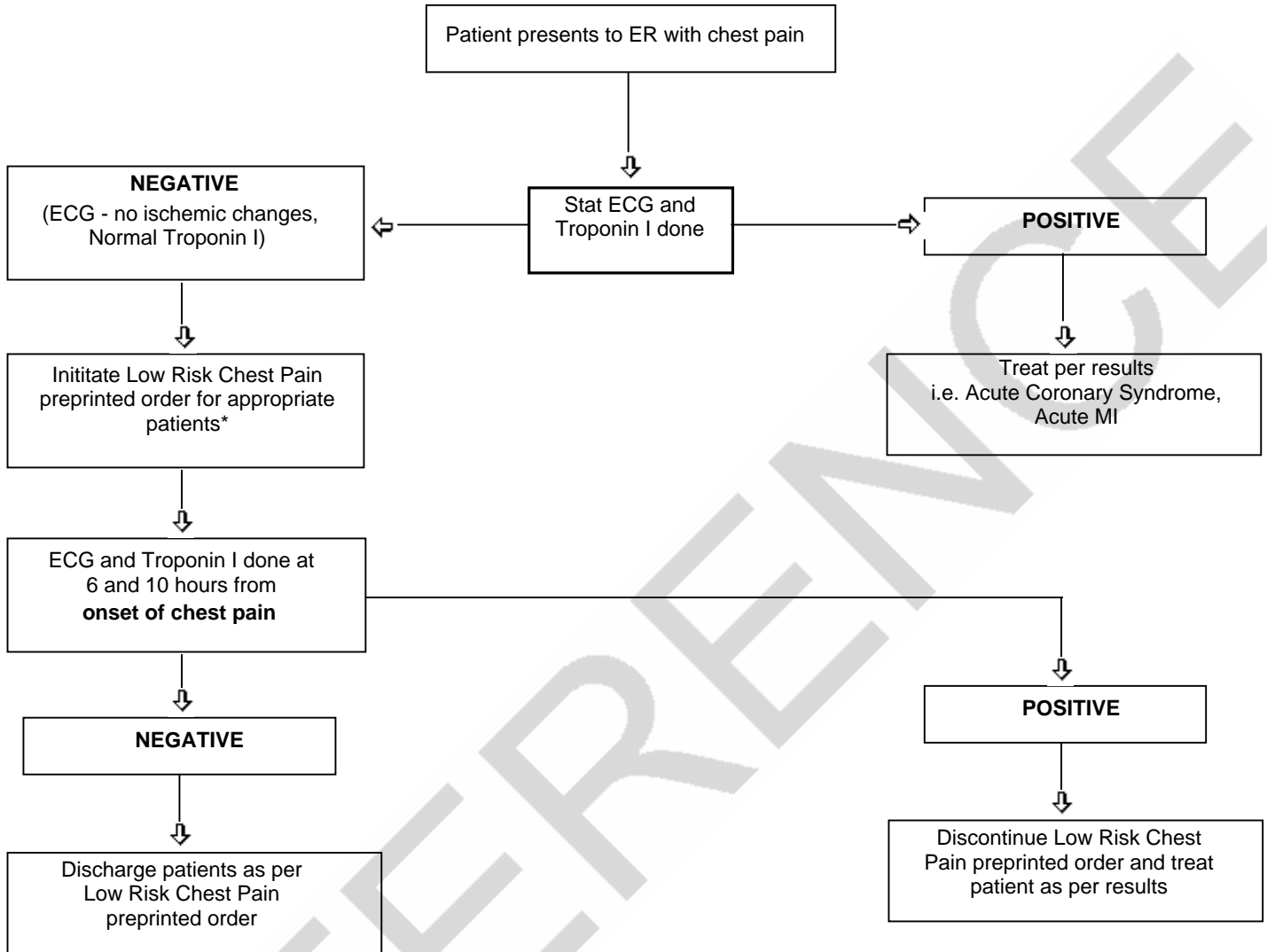
- Prescription for:  EC ASA 81 mg po daily  
 Nitroglycerin spray SL prn

Additional Orders

Date: \_\_\_\_\_ Time: \_\_\_\_\_

MD SIGNATURE \_\_\_\_\_





\* Exclude patients with:

- claudication,
- end stage renal failure,
- previous coronary artery bypass graft
- unable to walk unaided for 10 minutes
- abnormal ECG e.g. LBBB, LVH, ST changes, T wave inversions, pacemaker, on digoxin

**Guidelines for Exercise Stress Test**

Patients on beta blockers for hypertension - instruct patient to hold beta blocker medication for 24 hours, book exercise stress test for 24 hours following medication hold.

All other appropriate patients, book exercise stress test at next available appointment.

