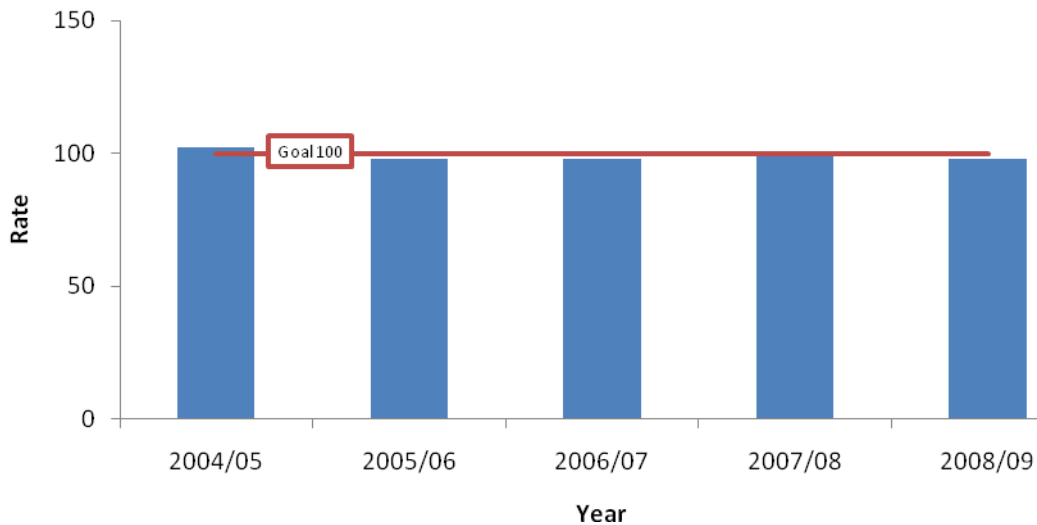


Hospital Standardized Mortality Ratio (HSMR)

The Hospital Standardized Mortality Ratio (HSMR) is a measure that compares the hospital's mortality rate with the overall average national rate. HSMR is calculated as the ratio of the actual number of hospital deaths compared with the expected number of hospital deaths. The HSMR is based on diagnostic groups accounting for 80% of deaths in hospitals. It is adjusted for other factors affecting mortality such as age, sex and length of hospital stay.

Rate of Hospital Standardized Mortality Ratio



CVH Data

Fiscal Year (April 1 – March 31)	04/05	05/06	06/07	07/08	08/09
HSMR	102	98	98	100	98

Interpretation:

An HSMR greater than 100 suggests the hospital's mortality rate is higher than the overall average and an HSMR smaller than 100 suggests the mortality rate is lower than the overall average. The ratio equal to 100 suggests that there is no difference between the hospital's mortality rate and the average national experience.

In 08/09, CVH's HSMR was 98. This is a reflection of our continuous effort to prevent unnecessary deaths. While not every hospital death is preventable, reducing mortality is our goal and by using HSMR results we will continue to identify opportunities for improvement, motivate change and track progress.